

D15-F-F-V1A

1. Description:

D15-F-F-V1A is a simple DB15 Female to DB15 Female pass-through adapter breakout board. It brings all 15 pins of two DB15 Female connectors to screw terminal blocks and headers for easy testing, prototyping and breadboard connection. All 15 pins of a Female connector directly connect to another Female connector. User can also use the two 8 pins headers on both sides of the breakout board to connect to breadboard or prototype PCB.

2. Features:

- All 16 pins (including shield) of two DB15 Female connectors brought out to headers and screw terminal blocks
- All 15 pins of a DB15 Female connector directly connect to another DB15 Female connector.
- Various connecting method chosen by users.
- 4 X 2.0mm mounting holes
- 1.57"(40mm)X2.34"(59.4mm) board dimensions

3. Parts:

- 1) 1pc X D15-FM-FM-V1A PCB
- 2) 2pc X DB15 Female Connector
- 3) 2pc X 8pin 0.1"(2.54mm) spacing terminal block
- 4) 1pc X 16pin 0.1"(2.54mm) header
- 5) 4pcs X4-40UNC diameter 8.3mm long screws

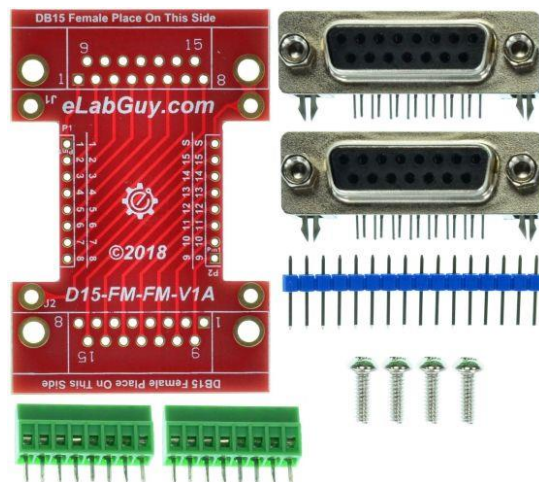
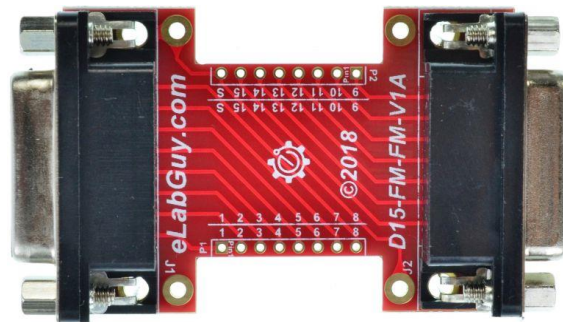


Figure 1: Parts inside the kit
(Note: the module is not assembled, user can decide which connector to use on the module.)

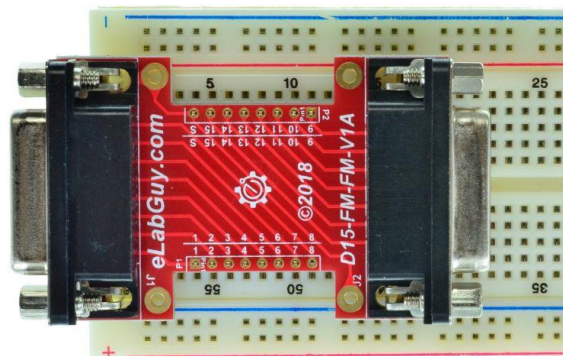


Figure 2: Example of connecting the D15-F-F-V1A on a proto PCB (Note: This picture only shows the pins spacing, actual use may not be used on a breadboard)



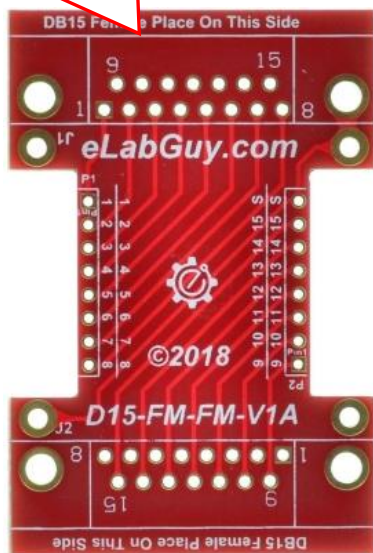
Figure 3: D15-F-F-V1A with headers



Figure 4: D15-F-F-V1A with terminal blocks

Caution!! When assembling the D15-F-F-V1A, please make sure you place the connector on the right side.

D15-F-F-V1A (Female) should place on this side



D15-M-M-V1A (Male) should place on this side



Related products from eLabGuy:



D15-F-M-V1A



D15-F-F-V1A



D15-M-M-V1A